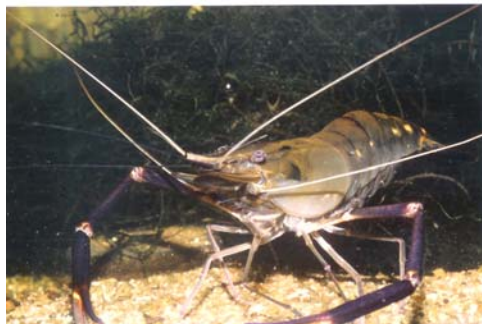


# Longclaw Freshwater Prawn

## *Macrobrachium rosenbergii*



### Natural Range

Northern Australia

### Maximum Size

Body size up to 30cm

### Water Quality

- Temperature: 18°C - 28°C.
- pH: 7.0—7.4
- General Hardness: 50—150 ppm.

### Feeding

Will eat any type of fish food (a scavenger by nature).

### General Information

This species makes a fascinating and easy to keep aquarium subject, unfortunately they are expert hunters and are not recommended to be kept with fish that they might be able to catch.

As the Long Claw Prawn is quite territorial, plenty of hiding places in the form of rocks, mangrove roots and even PVC pipes should be provided. Caution must be used when handling Long Claw Prawns as they are quite capable of reaching back with their claws and giving your fingers a nasty nip.

Freshwater prawns derive oxygen from water as fish do and therefore good water quality, adequate aeration and filtration are important for their well-being. They are very sensitive to copper in the water so ensure medications containing copper are not used.